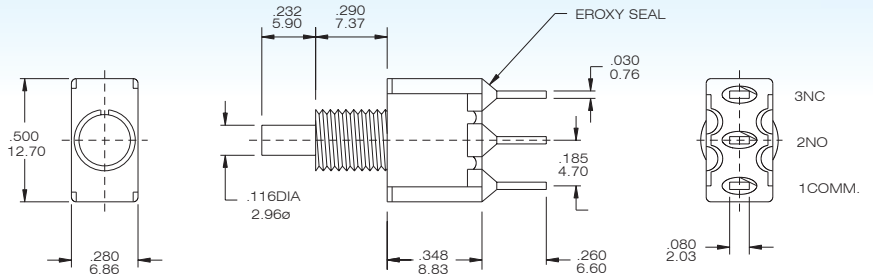
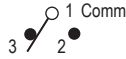




## SPDT



Model No.	Switching position	
P8701	on	Mom
Term. Comm.	1-3	1-2

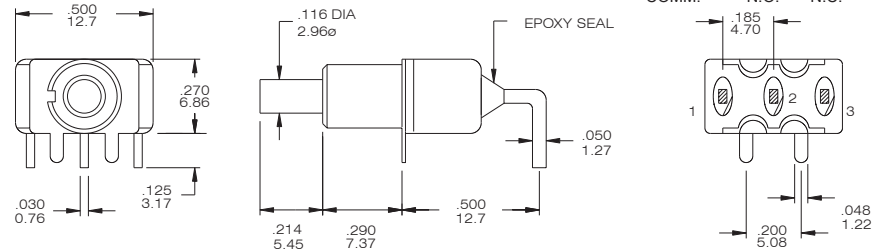
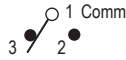


P8701-FBR-E

## SPDT

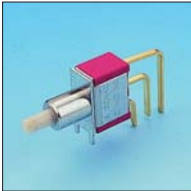


Model No.	Switching position	
P8701-A4	on	Mom
Term. Comm.	1-3	1-2

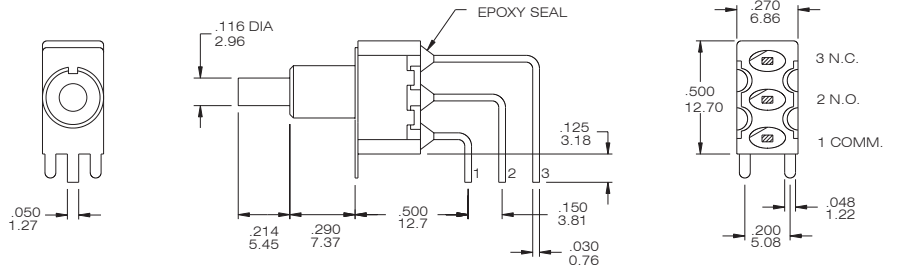


P8701-A4-NR-E

## SPDT



Model No.	Switching position	
P8701-A5	on	Mom
Term. Comm.	1-3	1-2

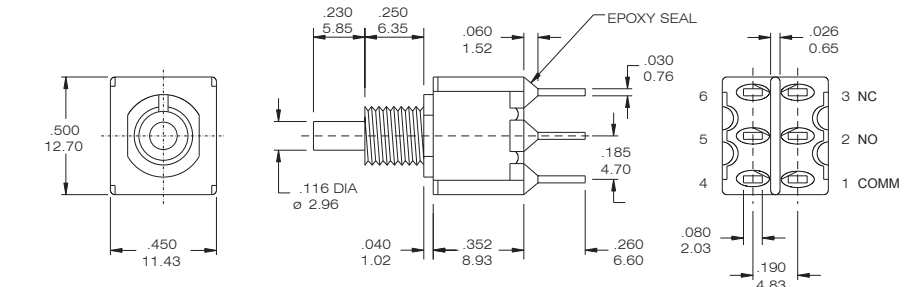


P8701-A5-NR-E

## DPDT



Model No.	Switching position	
P8702	on	Mom
Term. Comm.	1-3 4-6	1-2 4-5

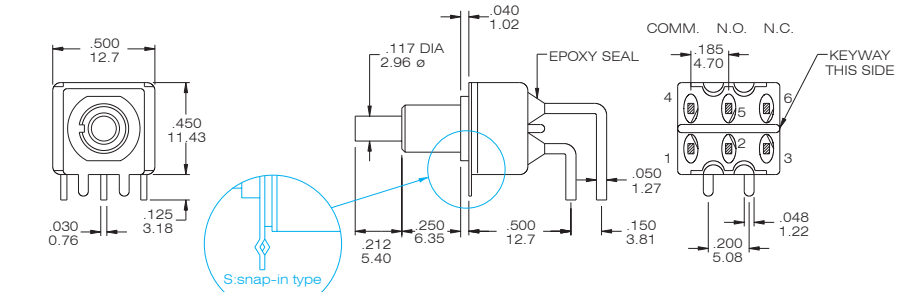
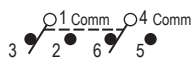


P8702-F4BR-E

## DPDT

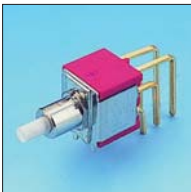


Model No.	Switching position	
P8702-A4	on	Mom
Term. Comm.	1-3 4-6	1-2 4-5

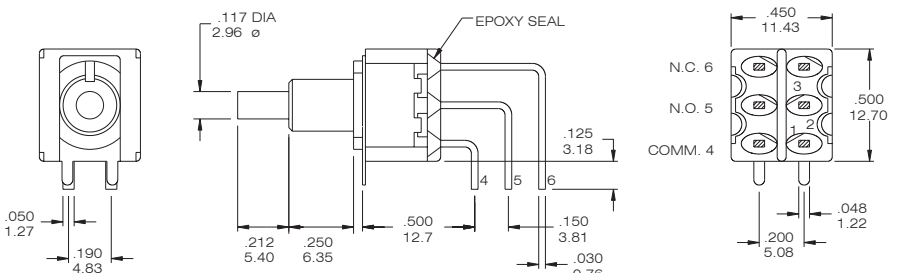
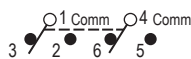


P8702-A4-N4R-E/ P8702-A4-N4R-E-S

## DPDT



Model No.	Switching position	
P8702-A5	on	Mom
Term. Comm.	1-3 4-6	1-2 4-5



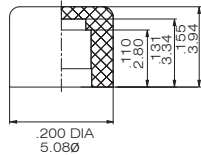
P8702-A5-N4R-E



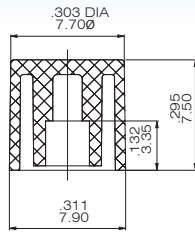
## Cap and Actuator Option

## Cap color Option

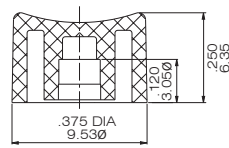
CV



CV1

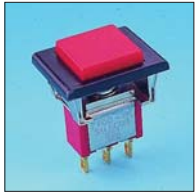


CV2

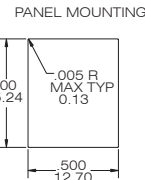
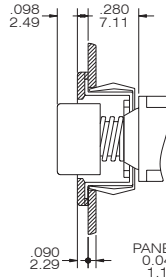
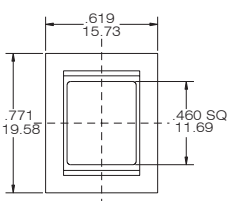


CAP & ACTUATOR OPTIONS	
1	White
2	Black(Std.)
3	Red
4	Orange
5	Yellow
6	Green
7	Blue
9	Gray

INDEX



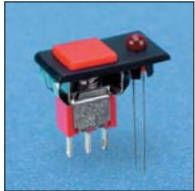
F22A



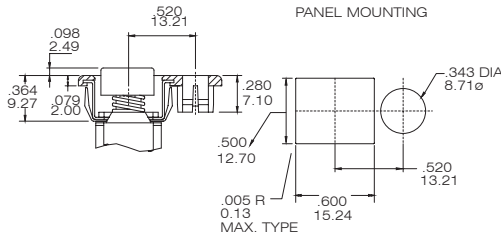
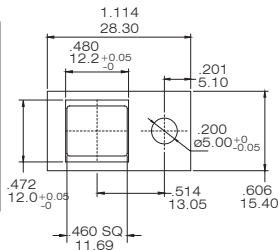
P870 \* -F22A- \* -BR-E

TOGGLE

ROCKER



F32A

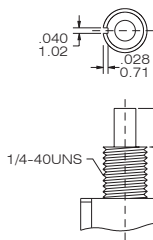


P870 \* -F32A- \* -BQ-E

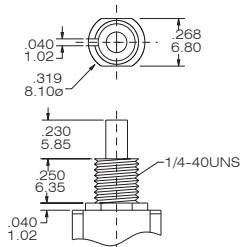
SLIDE

PUSH BUTTON

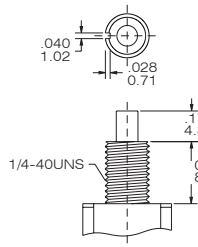
F thd.  
N non-thd.  
(only for SPDT)



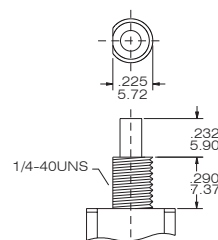
F4 thd.  
N4 non-thd.



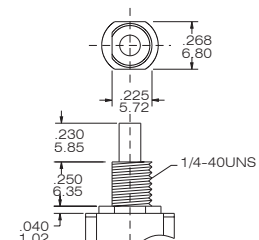
E thd.  
(only for SPDT)



F8 thd.  
N8 non-thd.  
(only for SPDT)



F9 thd.  
N9 non-thd.



DIP

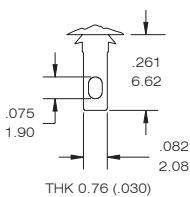
## Bushing Option

## TERMINAL OPTION (ONLY FOR THE STRAGHT TYPE)

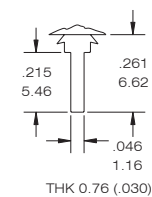
## TERMINAL SEAL OPTION

## RUBBER HOOD

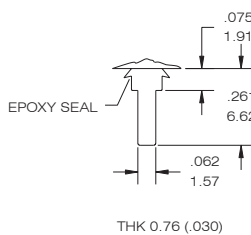
B STD



C PRINTED CIRCUIT



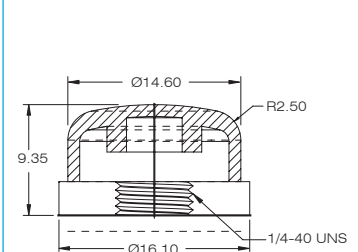
D QUICK CONNECT



E TERMINAL SEAL



E4



TACT



## CONTACT MATERIAL OPTIONS

CODE	CONTACT MATERIAL	TERMINAL MATERIAL	RATING
Q	Silver plated	Silver plated	1A @ 120V AC or 28 V DC;
R	Gold plated over nickel plated	Gold plated over nickel plated	0.4 VA MAX@ 20V AC or DC MAX
G	Gold plated over silver plated	Gold plated over silver plated	0.4 VA MAX @ 20 V AC or DC MAX or 1 A @ 120V AC or 28 V DC;

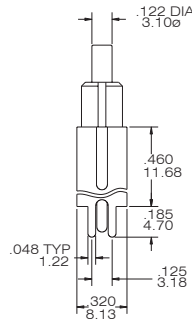
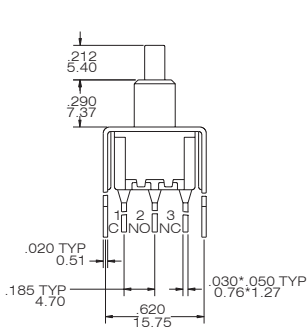
## VERTICAL SUPPORT BRACKET OPTION

(only apply the straight type terminal-Please modify the terminal option is "c" code)

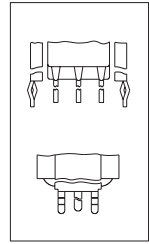
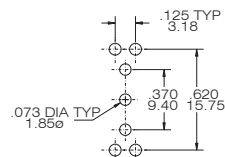
### S20/V20



### SPDT



### P.C. MOUNTING



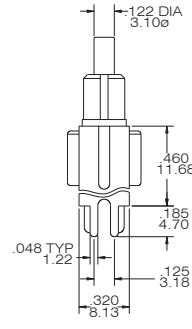
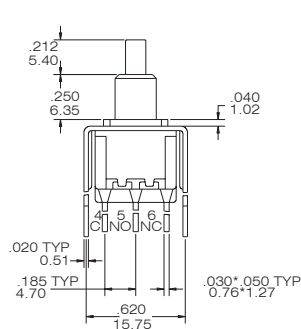
### SNAP-IN V 20

### P8701-NCR-E-S20

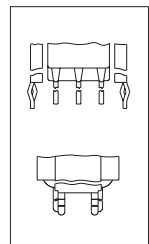
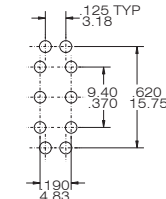
### S20/V20



### DPDT



### P.C. MOUNTING

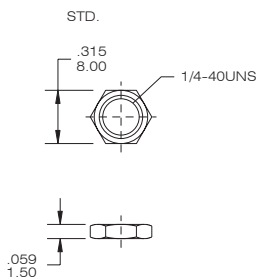


### SNAP-IN V 20

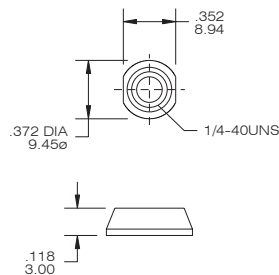
### P8702-N4CR-E-S20

## The hard ware of T80-P push button switches

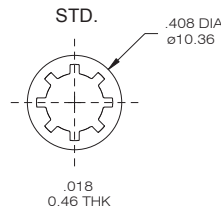
### NUT



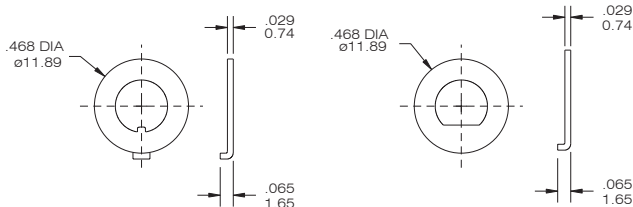
### DRESS NUT



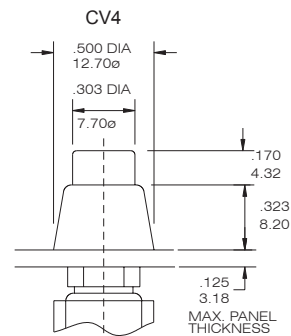
### LOCK WASHER



### LOCKING RING



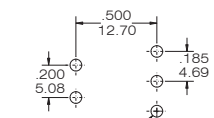
### DRESS NUT & CAP



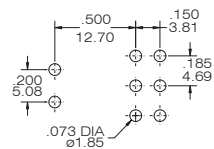
To order dress nut only.

## The P.C.B mounting Dimension

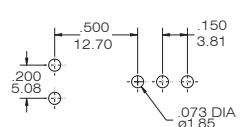
### P8701-A4



### P8702-A4



### P8701-A5



### P8702-A5

